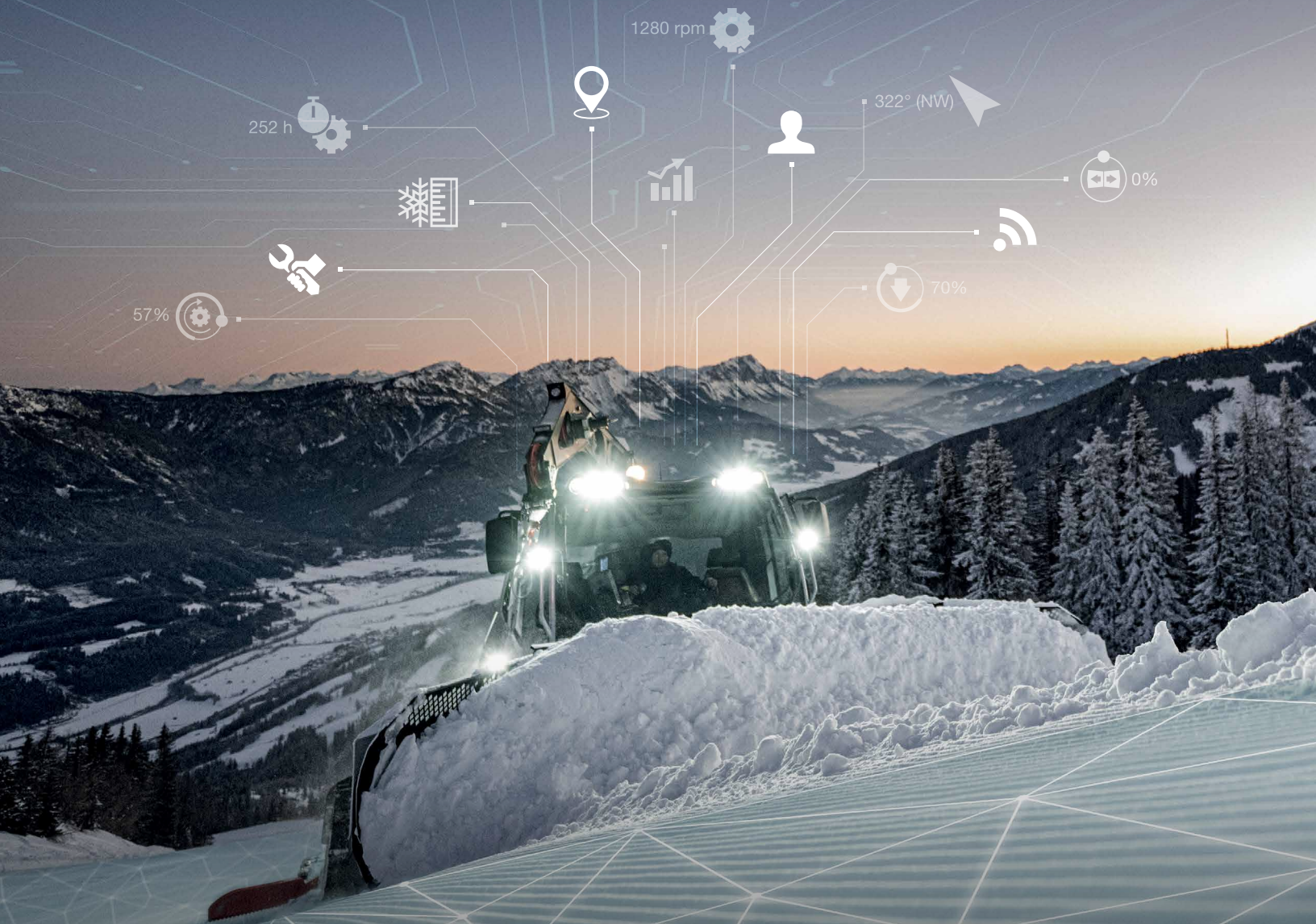


PRINOTH CONNECT SNOW MEASUREMENT



DIGITAL TOOLS FOR YOUR SKI RESORT

**BE SUSTAINABLE
AND SAVE MONEY**

sg.prinoth.com

Prinoth®



PRINOTH CONNECT SNOW MEASUREMENT

SMARTER SNOW MANAGEMENT, MORE SUSTAINABILITY

A snow measurement system is essential for every ski resort. Real-time snow depth measurement means perfect slopes and happy guests.

EXTEND YOUR SEASON

Distribute snow where it's needed. Increase coverage early in the season and maintain coverage during the late season or after a weather event.

CUT COSTS AND BOOST SUSTAINABILITY

Save electricity, water and time on snow making and slope maintenance by knowing exactly how much snow you need and where it should go.

WORLD-CLASS PARKS AND CROSS COUNTRY TRAILS FOR LESS

Save on fuel, labor and machine hours.

ONE SYSTEM, ENDLESS POSSIBILITIES

Slopes, parks, trails and roads.

FEATURES

- Dual antenna system ensures maximum precision
- Multiple sensors measure snow depth under both blade and tracks
- Triangular grid meshing produces the most detailed terrain model, enabling precise measurements and accurate data readings.
- Reliable performance over the entire speed range of the machine
- Live data exchange between the systems for seamless communication
- Real-time snow depth visible on the vehicle screen
- Flexible installation options: available as a factory install or retrofit on any groomer regardless of manufacturer.
- Detailed analysis to gain in-depth snow insights that help with planning
- View snow depth data directly in Prinoth's fleet management software; fully integrated with the online resort management platform Skadii.